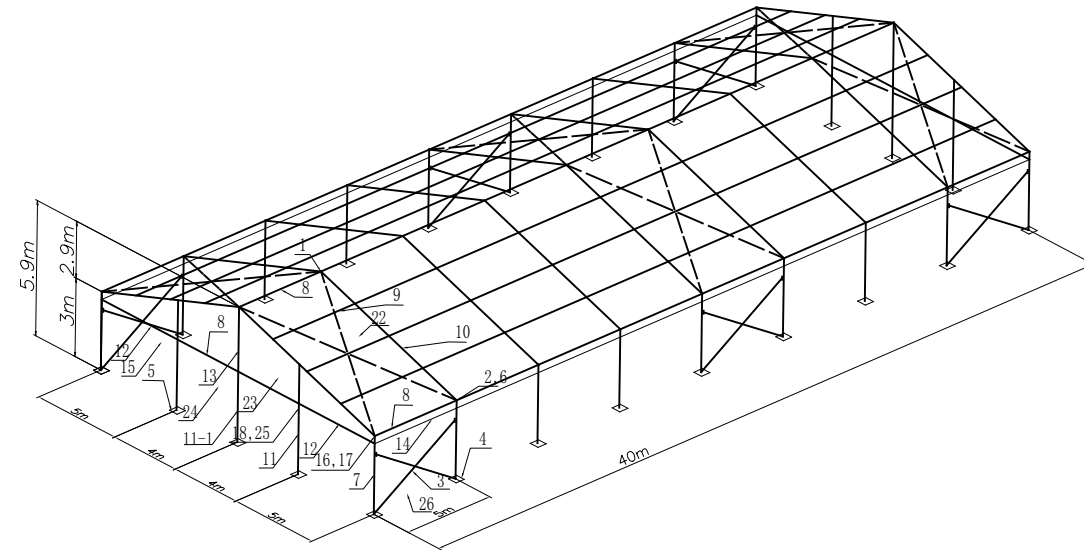


# 18mx40m Party tent

Main Profile Size					
Purpose	Leg, Roof Beam & Gable Pole	Eaves Rail	Tension Bar	Purlin	Trusses

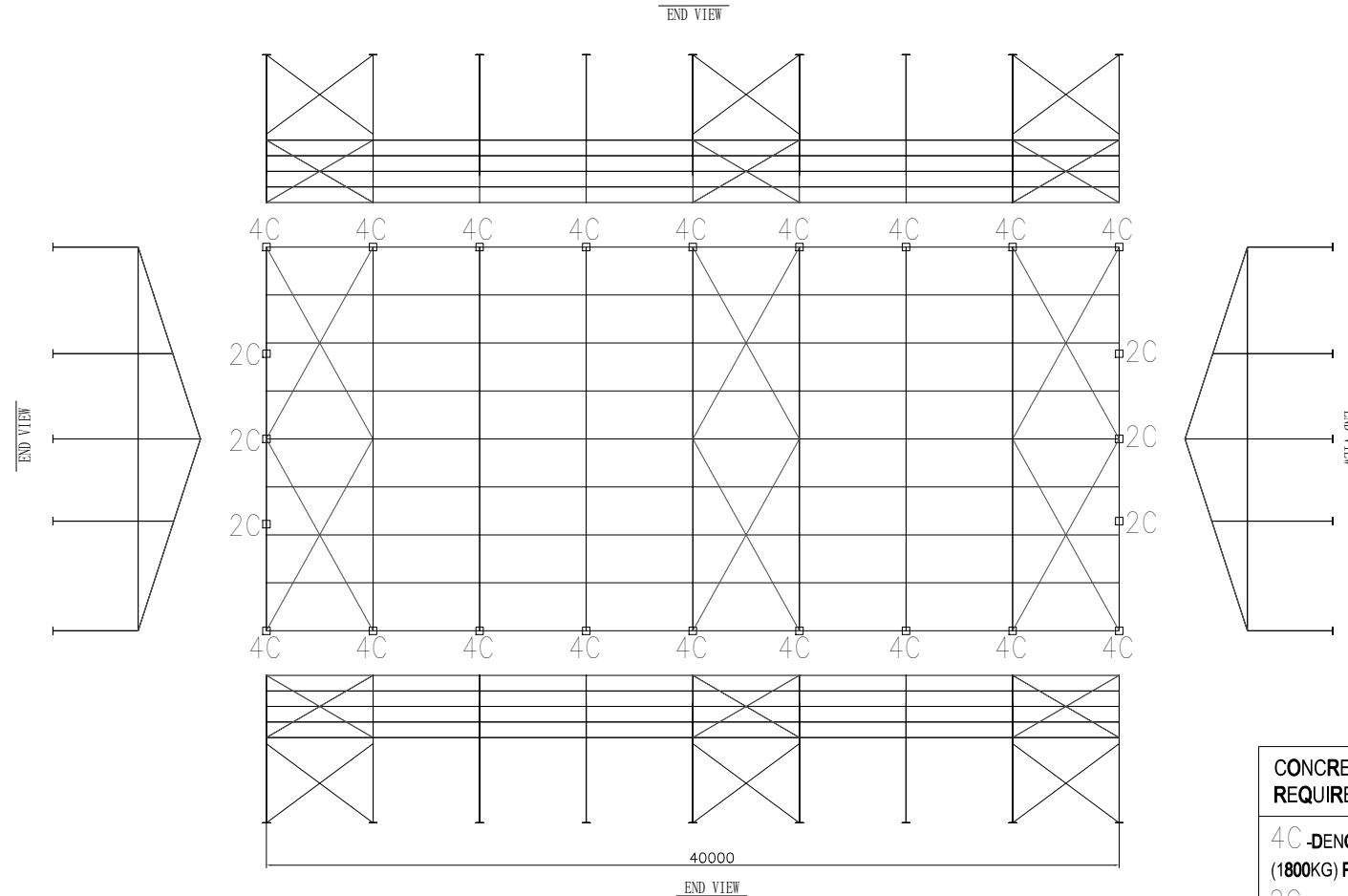


**Temporary Use ONLY**

Setup Date: \_\_\_/\_\_\_/\_\_\_

Take Down: \_\_\_/\_\_\_/\_\_\_

28	hexagonal screw	M12X120	8pcs
27	hexagonal screw	M16X110	166pcs
26	standard transparent window		20pairs
25	tension		6pcs
24	sidewall transparent window		4pairs
23	triangle pannel		2pairs
22	roof cover		8pcs
21	roof wire	Ø8X8615	6pairs
20	sidewall window tension rail	1''x4000 galv. steel tube	2pcs
19	standard window tension rail	1''x5000 galv. steel tube	20pcs
18	direct joints at vertical rail	50x30x500	24pcs
17	hooked joints of rail	70x30x390	4pcs
16	triangle rail joints at both ends	70x30x500	4pcs
15	triangle pannel tension rail	80X40X3900	4pcs
14	cover tension rail	80X40X4900	20pcs
13	mid insert of connection triangle pvc	48X20X3440	2pcs
12	side-eave beam	102x85x4740	4pcs
11-1	gable pole-1	166x87x5870	2pcs
11	gable pole	166x87x4480	4pcs
10	roof beam	166x87x5800+2300	18pcs
9	purlin	60x60x4912	48pcs
8-1	eave beam-1	102x85x3892	4pcs
8	eave beam	102x85x4912	24pcs
7	leg	166x87x2735	18pcs
6	tension pole	M18X350	18pcs
5	gable pole base plate	300x300x100	6pcs
4	base plate	300x300x100	18pcs
3	trusses	50x60x5503	6pairs
2	angle insert		18pcs
1	top joints		9pcs
Item	Name of part	Size(mm)	quantity



**CONCRETE BLOCK BALLAST REQUIREMENTS**  
 4C - DENOTES ONE MEGA BLOCK (1800KG) PER LEG  
 2C - DENOTES ONE MINI BLOCK (900KG) PER LEG

**Remarks**

**ANCHOR REQUIREMENTS @ 100 kph**  
 Uplift Forces: 139 kN  
 Horizontal Forces: 103 kN  
 Vertical Uplift: 14500 kg  
 Tent Weight: 4512 kg  
 Min Ballast / leg: 1800 kg (900kg GABLE)

Consultant Scope of Work is Limited to:  
 1) Scope of work is limited to the review of structure performance in wind gusts not exceeding the max wind speed as defined below.  
 2) Scope of work does not included physical testing of the tent materials, review of site conditions, tent erection procedures or inspection of the erected structure.  
 3) Scope of work shall not be construed as approval or guarantee that the erected tent structure will perform safely or otherwise for any particular use or site.  
 4) The consultant will not be held liable for injury or property damage resulting from any and all use or application of the tent structure.  
 Design Codes : ABC2014, NBC2010 & ASCE 7-10  
 Exposure: C  
 Category: 2  
 Max q: 0.5 kPa  
 Max V: 100 kph  
 Snow Loads: None

**Revision info**

Rev.	Revised matter	Drawn	Approved	Date
A0	ISSUED FOR CONSTRUCTION		RMB	05.27.13
A1	ADDED TENT WEIGHT		RMB	06.10.13
A2	NOTE & CODE CHANGE		RMB	06.06.16

Consultant Stamp

**Cosco TENT**

**SPECIAL Event SALES**

Drawn By	Manager	Checked	Approved

Dwg No.	SES-B1840		
Mat'1	6N01-T6 JIS H4100-1982		
Rev.	B	Item	
Wt	/ kg/m	Unit	MM
Scale	1:1	Date	28-03-18