

AREA: 400 sqft [37 sqm]

ITEM NO.	DESCRIPTION	QTY.
1	CANVAS TOP, 20'X10'	1
2	CROSS CABLE, 40'x10'	2
3	MID CONNECTOR TUBE	2
4	CORNER CONNECTOR, 90DEG	4
5	FLAG	2
6	CENTER POLE, 30X10	2
7	EAVE TUBE, 10'	11
8	JOINTER TUBE	4
9	TENT LEG, 8'	6
10	MARQUEE BASE PLATE, 180x60	6
11	WALL FR WINDOW, 8' x 20'	4
12	WALL FR WINDOW, 8' x 10'	2



DESIGN PARAMETERS:
 WIND LOADS: NBC2010 & ASCE 7-10
 MAX WIND SPEED: 100 KPH [62MPH]
 EXPOSURE: B
 CATEGORY: 3
 WIND LOAD: 0.50 kPa [10 psf.]
 RAIN LOAD: 0.22 kPa [4.6 psf.]
 SNOW LOAD: NONE
 SEISMIC LOAD: NOT ACPLICABLE

ANCHOR REQUIREMENTS @ 100KPH:
 UPLIFT FORCES: 750 lbs/POST
 HORIZONTAL FORCES: 1100 lbs/POST
 CONCRETE BLOCK: 1400LB BLOCK/POST
 CONCRETE ANCHOR:
 -MIN TWO 1/2"x4" EXPANSION ANCHOR
 EMBEDDED 3-5/8"
 -THIS ASSUMES A MIN. CONCRETE STRENGTH OF 2500PSI

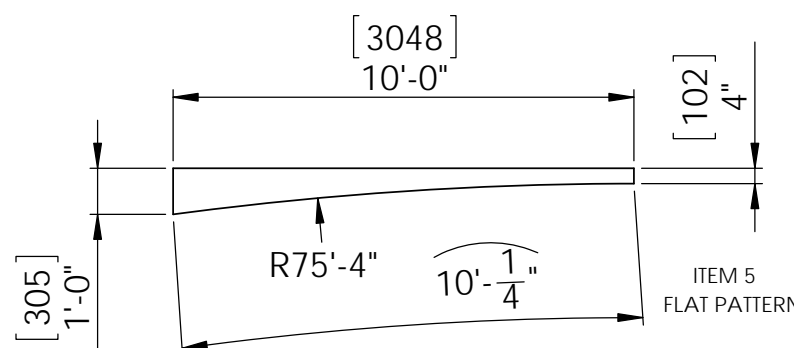
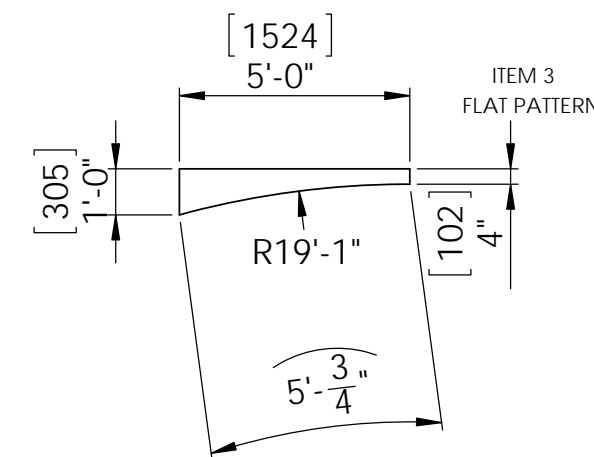
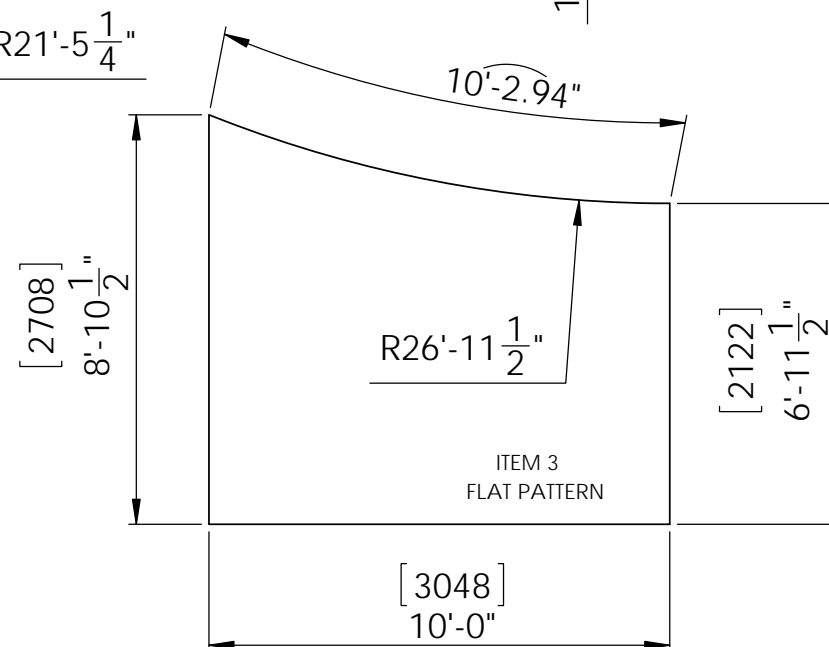
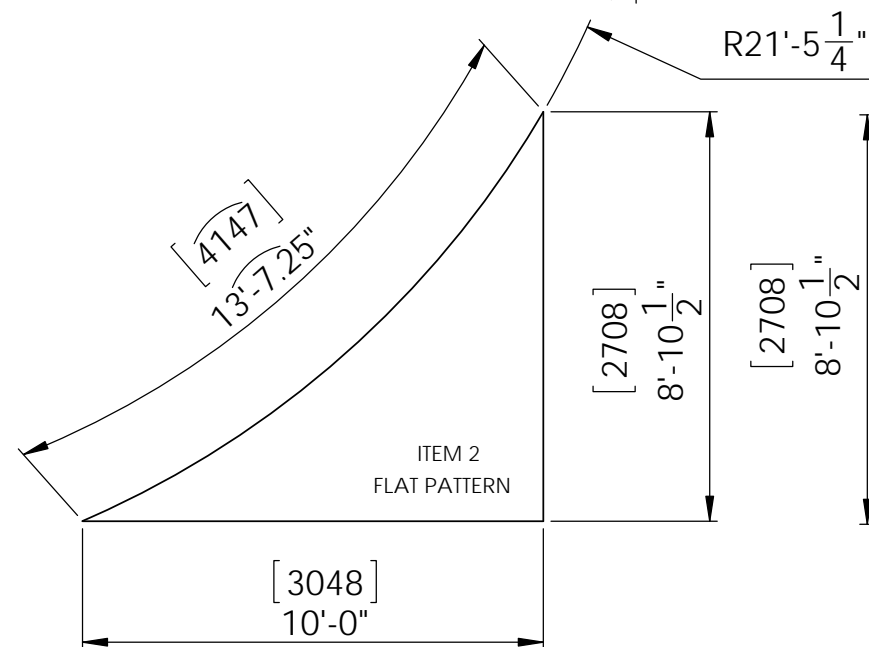
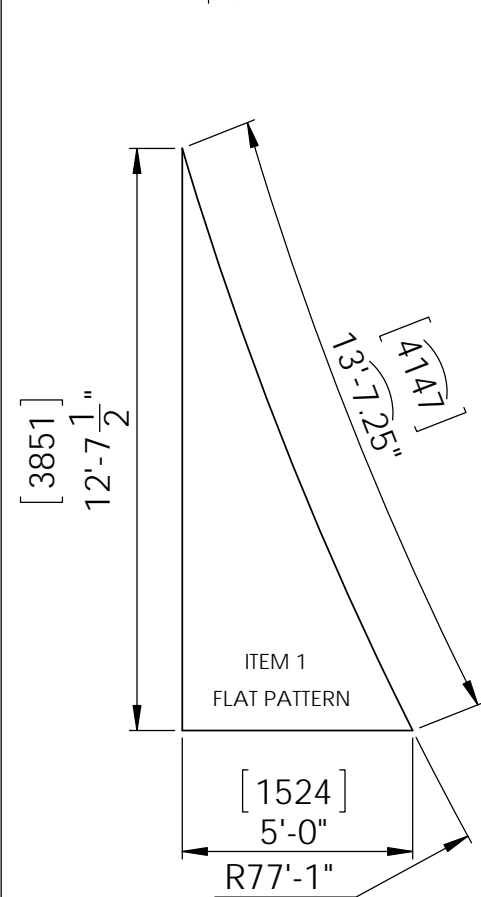
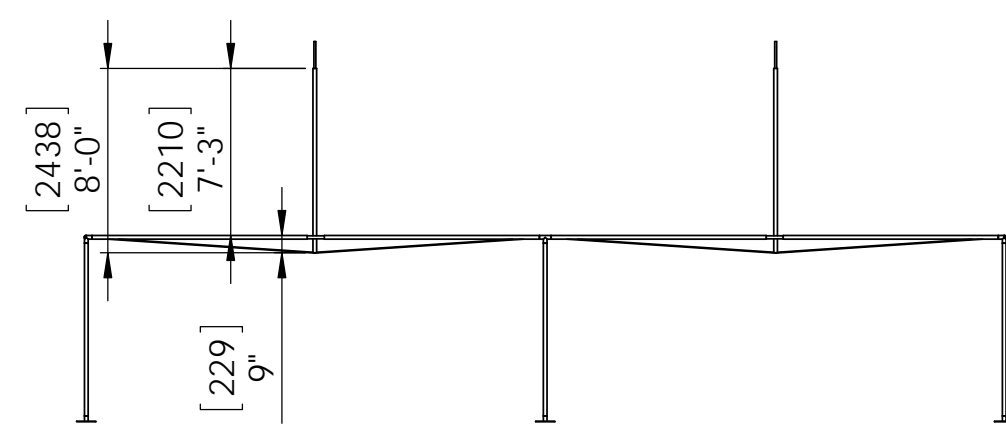
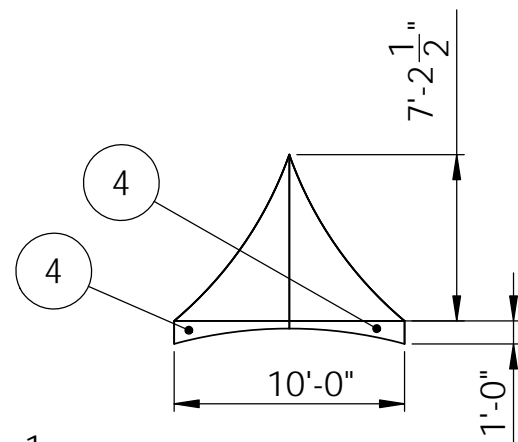
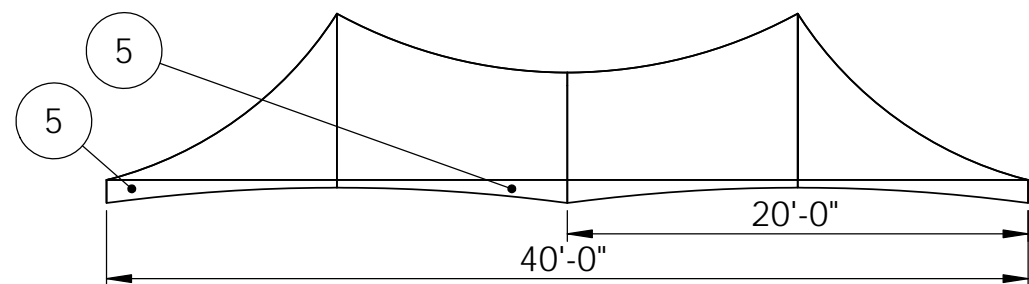
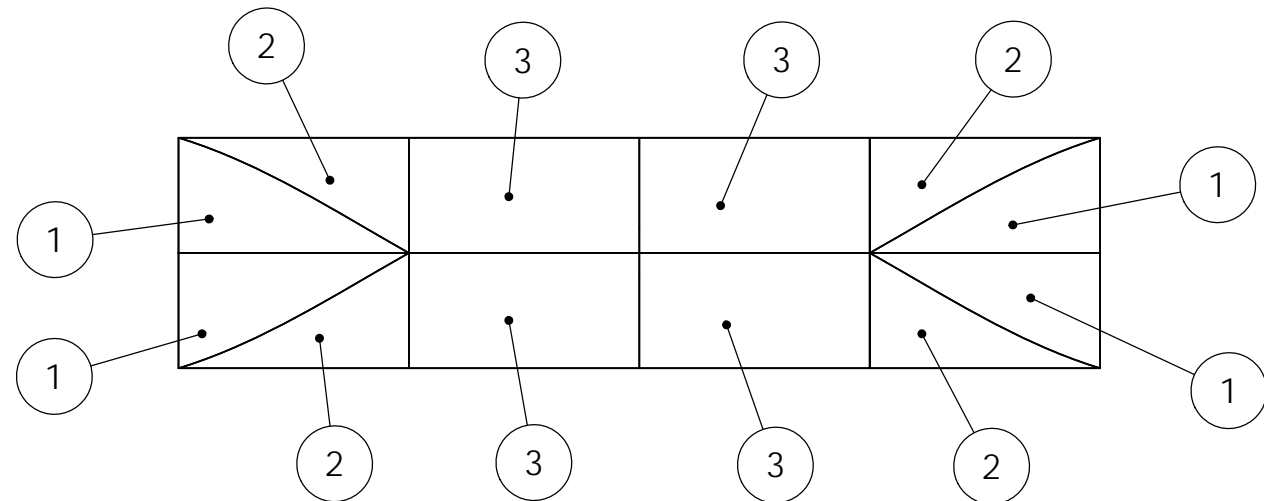
*INSTALLATION CREW MUST ENSURE THAT EACH STRUCTURE/INSTALLION IS PROPERLY SECURED. SITE CONDITIONS MAY REQUIRE ALTERNATE ANCHORING METHODS OR ADDITIONAL ANCHORING. RUBBER MAT SHOULD BE USED B/W GROUND AND BLOCKS

CONSULTANT SCOPE OF WORK IS LIMITED TO:
 1) LIMITED TO THE REVIEW OF THE STRUCTURE PERFORMANCE IN WIND GUSTS NOT EXCEEDING THE MAX WIND SPEED AS DEFINED BELOW.
 2) SCOPE DOES NOT INCLUDE PHYSICAL TESTING OF THE TENT MATERIALS, REVIEW OF THE SITE CONDITIONS, TENTE ERECTION PROCEDURES OR INSPECTION OF THE ERECTED STRUCTURE
 3) THIS SHALL NOT BE CONSTRUED AS APPROVAL OR GUARANTEE THAT THE ERECTED TENT STRUCTURE WILL PERFORM SAFELY OR OTHERWISE FOR ANY PARTICULAR USE OR SITE
 4) THE CONSULTANT WILL NOT BE HELD LIABLE FOR INJURY OR PROTERTY DAMAGE RESULTING FROM ANY AND ALL USES OR APPLICATION OF THE TENT STRUCTURE

MATERIALS:
 FRAME: ANODIZED ALUMINUM TUBING ELECTROPLATED STEEL TUBING
 FABRIC CLADDING: VINYL/POLYESTER FABRIC FIRE RETARDANT RATING- ULC S-109, NFPA 701, CALIFORNIA FIRE MARSHALL

ALL DIMENSIONS IN INCHES		CLIENT	
REV	DESCRIPTION	DRAWN	DATE
1	ISSUED FOR CONFR	ND	04/10/14
CONSULTANT: ALSTRAN CORP APEGA PERMIT P10591		DESCRIPTION MARQUEE TENT - 40X10	
SCALE 1:75	SHEET SIZE B	DRAWN ND	DATE 04/10/14
<small>NOTICE: THIS DOCUMENT CONTAINS CONFIDENTIAL INFORMATION AND SHALL NOT BE REPRODUCED OR DISCLOSED IN WHOLE OR IN PART FOR USE BY ANY OTHER PARTY WITHOUT PRIOR WRITTEN CONSENT OF SPECIAL EVENT SALES. COPYRIGHT 2014</small>		CHECKED	DRAWING NUMBER SES-MQ4010
			REV 0





**** FLAT PATTERNS ARE ESTIMATES ONLY ****

NOTES:

- FLAT PATTERNS ARE ONLY APPROXIMATE; THEY DO NOT ACCOUNT FOR STRETCH OR SEAMS ON THE FABRIC.
- THE MFG MUST MAKE ALLOWANCES FOR THE ABOVE.
- FABRIC DESIGNED WITH ALLOWANCES FOR 9" OF SAG IN THE CENTER POST/CABLE SYSTEM

MATERIALS:
 FRAME: ANODIZED ALUMINUM TUBING ELECTROPLATED STEEL TUBING
 FABRIC CLADDING: VINYL/POLYESTER FABRIC FIRE RETARDANT RATING- ULC S-109, NFPA 701, CALIFORNIA FIRE MARSHALL

CONSULTANT SCOPE OF WORK IS LIMITED TO:
 1) LIMITED TO THE REVIEW OF THE STRUCTURE PERFORMANCE IN WIND GUSTS NOT EXCEEDING THE MAX WIND SPEED AS DEFINED BELOW.
 2) SCOPE DOES NOT INCLUDE PHYSICAL TESTING OF THE TENT MATERIALS, REVIEW OF THE SITE CONDITIONS, TENTE ERECTION PROCEDURES OR INSPECTION OF THE ERECTED STRUCTURE
 3) THIS SHALL NOT BE CONSTRUED AS APPROVAL OR GUARANTEE THAT THE ERECTED TENT STRUCTURE WILL PERFORM SAFELY OR OTHERWISE FOR ANY PARTICULAR USE OR SITE
 4) THE CONSULTANT WILL NOT BE HELD LIABLE FOR INJURY OR PROTERTY DAMAGE RESULTING FROM ANY AND ALL USES OR APPLICATION OF THE TENT STRUCTURE



ALL DIMENSIONS IN INCHES				CLIENT	
REV	DESCRIPTION	DRAWN	DATE		
1	ISSUED FOR CONSTRUCTION	ND	04/04/14		
DESCRIPTION				MARQUEE CANOPY - 40X10	
CONSULTANT: ALSTRAN CORP APEGA PERMIT P10591		SCALE 1:75		SHEET SIZE B	
DRAWN ND		DATE 04/04/14		EST. WEIGHT (#)	
CHECKED		DRAWING NUMBER SES-MQ4010		REV 0	